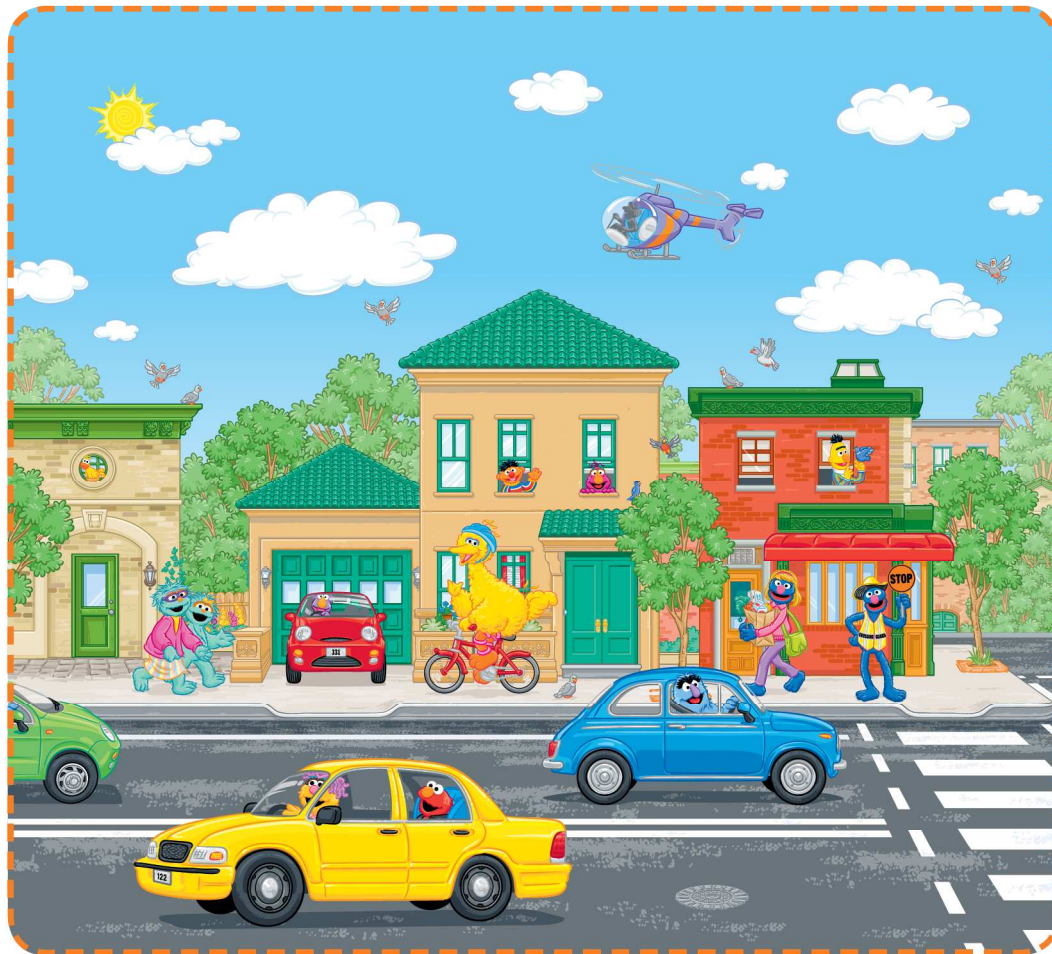


Elmo Stays Safe: Classroom Activities



Who's buckled up?

Look for all of the characters wearing seat belts or sitting in car seats in the street scene. Some are on the ground, and one is in the sky! When have you worn seat belts and sat in car seats?

A driveway is like a road!

Find the driveway in the street scene. Why is it important to be careful around driveways? How do you safely cross a driveway? What should you look for? What should you listen for? Who should you cross with?

Stay safe!

Look for safe behaviours and safe places in the two scenes. What are the signs, signals, people and places that help keep you safe?

Spot the difference!

What are the differences and similarities between the street scene and the playground scene? Where is it safe to play? Where is it safe to play with a ball? Who should carry the ball in the street scene?

Helping out!

Find the grown-ups in the two scenes. How are the grown-ups helping children in the street scene? How are the grown-ups helping children on the playground? Where is it important to hold hands with a grown-up?